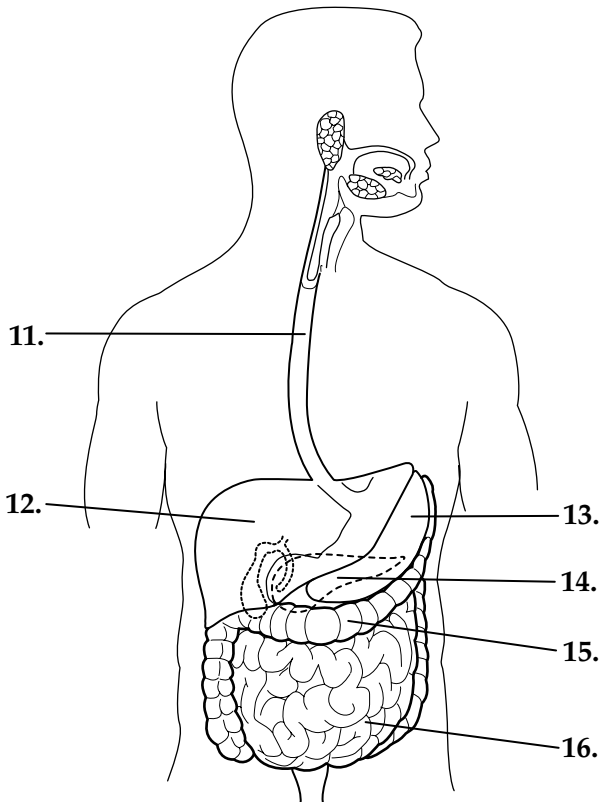


Chapter 38 Digestive and Excretory Systems Chapter Vocabulary Review

Matching *On the line provided, write the letter of the description that matches each term or structure.*

- | | |
|---------------------------|---|
| _____ 1. Calorie | a. hole in the stomach wall caused by bacteria |
| _____ 2. proteins | b. functional unit of the kidney |
| _____ 3. vitamins | c. mixture of partly digested food and stomach fluids |
| _____ 4. amylase | d. section of a nephron that conserves water and minimizes the volume of urine |
| _____ 5. peristalsis | e. enzyme contained in saliva |
| _____ 6. peptic ulcer | f. organic molecules that are needed by the body to help regulate body processes |
| _____ 7. chyme | g. unit equal to 1000 calories of heat energy, or 1 kilocalorie |
| _____ 8. nephron | h. contractions that squeeze food through the esophagus into the stomach |
| _____ 9. Bowman’s capsule | i. cup-shaped structure found in the upper end of a nephron |
| _____ 10. loop of Henle | j. nutrients that provide the body with the building materials it needs for growth and repair |

Labeling Diagrams *On the lines provided, label the parts of the digestive system that correspond with the numbers in the diagram.*



- 11. _____
- 12. _____
- 13. _____
- 14. _____
- 15. _____
- 16. _____

© Pearson Education, Inc. All rights reserved.

Multiple Choice *On the line provided, write the letter of the answer that best completes the sentence or answers the question.*

- _____ 17. Sugars and starches are the two kinds of
 a. fats. c. carbohydrates.
 b. proteins. d. minerals.
- _____ 18. What nutrients are made up of fatty acids and glycerol?
 a. carbohydrates c. fats
 b. proteins d. minerals
- _____ 19. Inorganic nutrients that the body usually needs in small amounts are called
 a. minerals. c. vitamins.
 b. proteins. d. fats.
- _____ 20. The small intestine is covered with projections called
 a. villi. c. chyme.
 b. nephrons. d. peristalsis.
- _____ 21. The main organs of the excretory system are the
 a. lungs. c. small intestines.
 b. kidneys. d. large intestines.
- _____ 22. Each kidney is connected to the urinary bladder by a(an)
 a. urethra. c. villus.
 b. renal artery. d. ureter.
- _____ 23. The saclike organ where liquid wastes are stored before excretion is the
 a. urethra. c. ureter.
 b. urinary bladder. d. loop of Henle.
- _____ 24. As blood enters a nephron, it flows through a network of capillaries known as a
 a. loop of Henle. c. villus.
 b. Bowman's capsule. d. glomerulus.
- _____ 25. The process by which the kidneys remove water, urea, glucose, salts and amino acids from the blood is called
 a. excretion. c. filtration.
 b. reabsorption. d. absorption.