

Chapter 20 Protists **Chapter Vocabulary Review**

Multiple Choice *On the lines provided, write the letter of the answer that best answers each question.*

- _____ 1. What is the name of the type of organism that is not a plant, an animal, a fungus, or a prokaryote?
 - a. protist
 - b. phycobilin
 - c. bacterium
 - d. spore

- _____ 2. Extensions of cytoplasm for movement and feeding are called
 - a. cilia.
 - b. pseudopods.
 - c. trichocysts.
 - d. pellicles.

- _____ 3. Amoeboid movement is a method of locomotion used by which of the following protozoans?
 - a. Zooflagellates
 - b. Sarcodines
 - c. Ciliates
 - d. Sporozoans

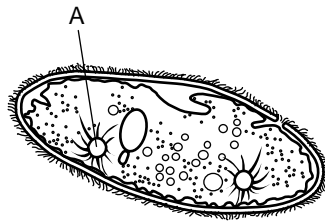
- _____ 4. All of the following play a role in the digestive process of a paramecium EXCEPT the
 - a. vacuoles.
 - b. gullet.
 - c. anal pore.
 - d. trichocysts.

- _____ 5. What structures do paramecia use for protection?
 - a. contractile vacuoles
 - b. pellicles
 - c. filaments
 - d. trichocysts

- _____ 6. Of the two nuclei found in a ciliate, which one contains a “reserve copy” of all the cell’s genes?
 - a. micronucleus
 - b. nucleolus
 - c. macronucleus
 - d. nuclear membrane

- _____ 7. What process allows paramecia to exchange genetic material with other paramecia?
 - a. asexual reproduction
 - b. binary fission
 - c. alternation of generations
 - d. conjugation

- _____ 8. What is the function of structure A in the diagram of the paramecium shown below?
 - a. temporarily stores food
 - b. collects, then pumps water out of the organism
 - c. releases spiny projections that protect the cell
 - d. used for feeding and movement



© Pearson Education, Inc. All rights reserved.

- _____ 9. What compounds do many algae have to help them absorb light at different wavelengths?
- | | |
|-------------|-----------------------|
| a. lipids | c. accessory pigments |
| b. proteins | d. DNA and RNA |
- _____ 10. What structure in euglenophytes help them to detect light?
- | | |
|---------------|-------------------|
| a. a pellicle | c. a flagellum |
| b. an eyespot | d. a micronucleus |
- _____ 11. What is the name of the membrane that covers a euglena?
- | | |
|-----------------|------------|
| a. a trichocyst | c. a stipe |
| b. a pellicle | d. a blade |
- _____ 12. What structures do sporophytes use in reproduction?
- | | |
|----------------|-----------|
| a. trichocysts | c. stipes |
| b. pellicles | d. spores |

Completion *On the lines provided, complete the following sentences.*

13. The small, photosynthetic organisms found near the surface of the ocean are called _____.
14. The accessory pigments found in red algae that are especially good at absorbing blue light are called _____.
15. The freshwater alga *Spirogyra* forms long threadlike colonies called _____.
16. The process in which many types of algae switch back and forth between haploid and diploid stages during their life cycles is called _____.
17. The gamete-producing haploid form of the green alga *Ulva* is known as a(an) _____.
18. The diploid form of *Ulva* is known as a(an) _____ because it produces spores.

Matching *On the lines provided, write the letter of the word that best matches each description.*

- | | |
|-------------------------|------------------|
| a. cellular slime mold | e. zoosporangium |
| b. acellular slime mold | f. antheridium |
| c. plasmodium | g. oogonium |
| d. hyphae | |

- _____ 19. single structure of a slime mold with many nuclei
- _____ 20. a spore case
- _____ 21. has distinct cells during every phase of its life cycle
- _____ 22. produces female nuclei in water molds
- _____ 23. thin filaments produced by water molds
- _____ 24. pass through a stage in which their cells fuse to form large cells with many nuclei
- _____ 25. produces male nuclei in water molds