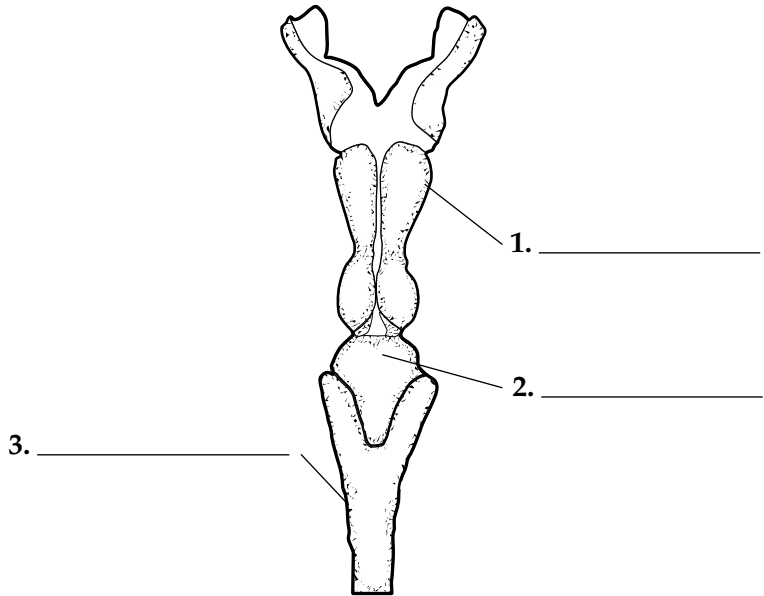


Chapter 30 Nonvertebrate Chordates, Fishes, and Amphibians **Chapter Vocabulary Review**

Labeling Diagrams *On the lines provided in the diagram, write the names of the structures of a fish's brain.*



Completion *On the lines provided, write the word that best completes each sentence.*

4. An animal that has a hollow nerve chord, a notochord, pharyngeal pouches, and a tail that extends beyond the anus is classified as a(an) _____.
5. Most chordates have a(an) _____ only when they are embryos.
6. The paired structures found in the throat region of a chordate are the _____.
7. The strong tissue that supports the body, but is softer and more flexible than bone, is _____.
8. In vertebrates, the spinal cord is enclosed and protected by individual _____.
9. In the heart of most chordates, blood enters a chamber called the _____.
10. The thick-walled, muscular chamber that is the actual pumping portion of the heart is the _____.
11. The portion of the brain that coordinates body movement is the _____.

© Pearson Education, Inc. All rights reserved.

12. In most vertebrates, the part of the brain called the _____ controls voluntary activities.
13. The sensitive receptor in most fishes that detects gentle currents and vibrations in the water is called the _____.
14. In many bony fishes, the gas-filled organ that helps adjust their buoyancy is called the _____.
15. Fishes that lay eggs are called _____.
16. Fishes that bear young that are born alive after developing in eggs inside the mother's body are said to be _____.
17. Fishes in which embryos are nourished by their mother's body as they develop are called _____.
18. In a frog, the structure at the end of the large intestine through which wastes are expelled is called the _____.
19. The surface of the eye of a frog is protected by a(an) _____.
20. Amphibians hear through _____ that are located on each side of the head.